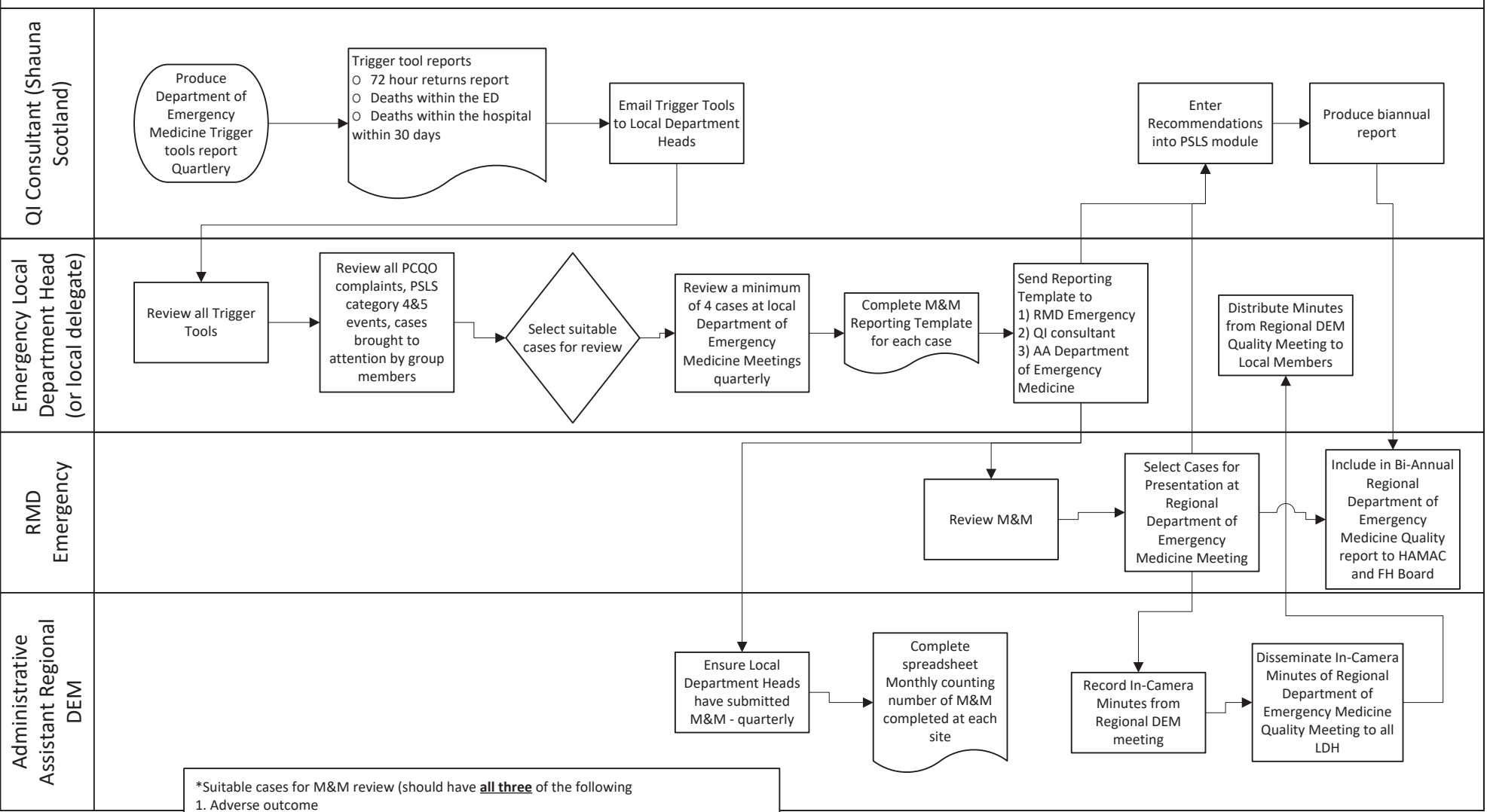


# FH Regional Department of Emergency Medicine Process for Completing and Recording M&M



\*Suitable cases for M&M review (should have **all three** of the following)

1. Adverse outcome
  - a) death, disability, harm or injury
  - b) near miss (potential harm avoided)
2. Preventable
3. Lessons to be learned about cognitive biases or system iss issues