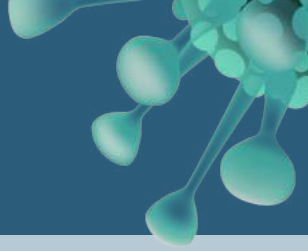




COVID-19



VISITORS TO LONG-TERM CARE

To keep our patients, families and staff safe and in keeping with the provincial health officer's recommendations for social distancing, we are limiting the number of visitors entering our buildings.

Do not visit if you are sick. If you are experiencing ANY cough, fever or other respiratory symptoms OR believe you may have been exposed to COVID-19 or any other respiratory illness, please do not enter our facility for the protection of our patients and employees.

Until further notice, one essential visitor only per day.

Long-Term Care



ONE

essential visitor

Visiting hours will be: 8am-8pm